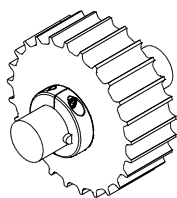
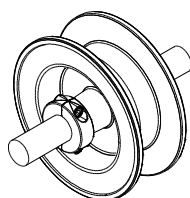


# Split shaft collars

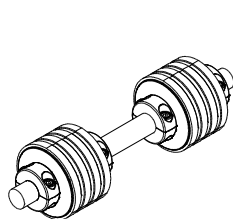
Example of applications



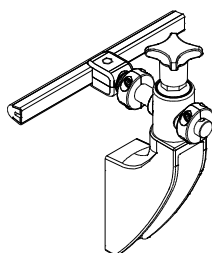
Sprockets



Idler wheels



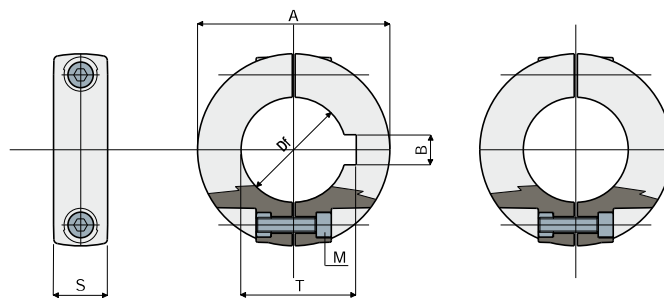
Rollers for chain return



Guide rail bracket

## Split shaft collars

Part. **288**



With Keyway

Without Keyway

With keyway							Code
Df (mm)	A (mm)	S (mm)	M (mm)	B (mm)	T (mm)		
20	40	14	M4	6	22,8	288 / 82555	
25	50	14	M5	8	28,3	288 / 82556	
30	50	14	M5	8	33,3	288 / 82557	
35	65	14	M5	10	38,3	288 / 82558	
40	65	14	M5	12	43,3	288 / 82559	

Without keyway					Code
Df (mm)	A (mm)	S (mm)	M (mm)		
12	35	13	M4	288 / 82560	
14	35	13	M4	288 / 82561	
16	35	13	M4	288 / 82562	
18	40	14	M4	288 / 82563	
20	40	14	M4	288 / 82564	
25	50	14	M5	288 / 82565	
30	50	14	M5	288 / 82566	
35	65	14	M5	288 / 82567	
40	65	14	M5	288 / 82568	

**MATERIALS:** Collars made out of reinforced polyamide black colour; bolt and nuts made out of stainless steel AISI 304.

**FEATURES:** Supplied assembled. To be assembled on the shaft to obtain wheels axial blocking; to be assembled on pins for guides supporting to adjust the position of guides according to the bottle size.

**BOX QUANTITY:** 96 pieces.

**ON REQUEST:**

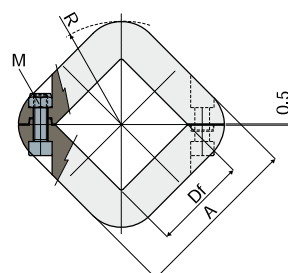
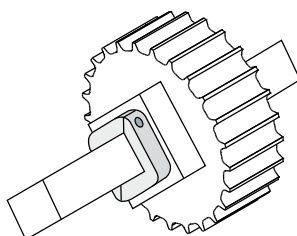
- Collars: With special bores, other colours.
- Box Quantity: According to your request.

## Split shaft collar

(with square bore 40x40 mm - 60x60 mm)

Part. **376**

Example of application



M (mm)	Df (mm)	A (mm)	R (mm)	Code
M6	40	72	44	376 / 83895
M6	60	92	58	376 / 85067

**NEW**

**MATERIALS:** Collars made out of reinforced polyamide black colour; self-locking nuts and screws made of stainless steel AISI 304.

**FEATURES:** To be assembled on the shaft to obtain wheels axial blocking.

**BOX QUANTITY:** 96 pieces.

**ON REQUEST:**

- Box quantity: According to your request.