

Connecting side

| Chain | | Pitch | Inner width | Inner link width | Outer plate width | Roller Ø | Pin Ø | Plate height | Projection over connecting link | Width over pin | Bearing area | Breaking load ISO | Breaking load | Weight | Connecting links |
|-------|---------------------|--------------|---------------------|---------------------|---------------------|---------------------|---------------------|--------------|---------------------------------|---------------------|-----------------|---------------------|---------------------|--------|------------------|
| | ISO | p | b ₁ min. | b ₂ max. | b ₃ min. | d ₁ max. | d ₂ max. | g max. | k max. | l ₁ max. | f | F _B min. | F _B min. | q ≈ | No. |
| | No. | mm | mm | mm | mm | mm | mm | mm | mm | mm | cm ² | kN | kN | kg/m | No. |
| 25 | ² 04 C-1 | 6,350 1/4 | 3,18 | 4,80 | 4,85 | 3,30 | 2,31 | 6,0 | 2,5 | 9,0 | 0,11 | 3,5 | 3,5 | 0,13 | 11,15 |
| 35 | ² 06 C-1 | 9,525 3/8 | 4,68 | 7,47 | 7,52 | 5,08 | 3,58 | 9,1 | 3,3 | 13,2 | 0,27 | 7,9 | 10,2 | 0,35 | 11,12,15 |
| 40 | 08 A-1 | 12,700 1/2 | 7,85 | 11,15 | 11,28 | 7,95 | 3,96 | 12,0 | 3,9 | 17,8 | 0,44 | 14,1 | 16,5 | 0,60 | 11,12,15 |
| 50 | 10 A-1 | 15,875 5/8 | 9,40 | 13,80 | 13,93 | 10,16 | 5,08 | 15,0 | 4,1 | 21,8 | 0,70 | 22,2 | 30,0 | 1,01 | 11,12,15 |
| 60 | ⁹ 12 A-1 | 19,050 3/4 | 12,57 | 17,70 | 17,85 | 11,91 | 5,94 | 18,0 | 4,6 | 26,9 | 1,05 | 31,8 | 40,0 | 1,58 | 11,111,12,15 |
| 80 | ⁹ 16 A-1 | 25,400 1 | 15,75 | 22,50 | 22,70 | 15,88 | 7,92 | 24,1 | 5,4 | 33,5 | 1,78 | 56,7 | 69,0 | 2,36 | 11,111,12 |
| 100 | ⁹ 20 A-1 | 31,750 1 1/4 | 18,90 | 27,40 | 27,60 | 19,05 | 9,53 | 30,1 | 6,1 | 41,1 | 2,61 | 88,5 | 92,5 | 3,80 | 111,12 |
| 120 | ⁹ 24 A-1 | 38,100 1 1/2 | 25,22 | 35,30 | 35,60 | 22,23 | 11,10 | 36,2 | 6,6 | 50,8 | 3,92 | 127,0 | 139,0 | 5,40 | 111,12 |
| 140 | ⁹ 28 A-1 | 44,450 1 3/4 | 25,22 | 37,00 | 37,30 | 25,40 | 12,70 | 42,2 | 7,4 | 54,9 | 4,70 | 172,4 | 178,5 | 7,30 | 111,12 |
| 160 | ⁹ 32 A-1 | 50,800 2 | 31,55 | 45,00 | 45,30 | 28,58 | 14,27 | 48,2 | 7,9 | 65,5 | 6,42 | 226,8 | 231,0 | 9,90 | 111,12 |
| 200 | ⁹ 40 A-1 | 63,500 2 1/2 | 37,85 | 54,70 | 55,00 | 39,68 | 19,84 | 60,3 | 10,0 | 80,3 | 10,85 | 353,8 | 387,0 | 16,50 | 111,12 |

Heavy duty design with reinforced side plates and enlarged bearing areas

| | | | | | | | | | | | | | | | |
|-------|--------------|--------------|-------|-------|-------|-------|-------|------|------|------|-------|-------|-------|-------|-----|
| 50 H | - | 15,875 5/8 | 9,40 | 14,60 | 14,73 | 10,16 | 5,08 | 15,0 | 4,1 | 23,4 | 0,75 | 22,2 | 32,0 | 1,18 | 11 |
| 60 H | ⁹ | 19,050 3/4 | 12,57 | 19,45 | 19,60 | 11,91 | 5,94 | 18,0 | 4,6 | 28,9 | 1,16 | 31,8 | 42,0 | 1,94 | 11 |
| 80 H | ⁹ | 25,400 1 | 15,75 | 24,28 | 24,48 | 15,88 | 7,92 | 24,1 | 5,4 | 37,0 | 1,92 | 56,7 | 72,0 | 3,04 | 111 |
| 100 H | ⁹ | 31,750 1 1/4 | 18,90 | 29,10 | 29,30 | 19,05 | 9,53 | 30,1 | 6,1 | 44,0 | 2,77 | 88,5 | 96,0 | 4,25 | 111 |
| 120 H | ⁹ | 38,100 1 1/2 | 25,22 | 37,00 | 37,30 | 22,23 | 11,10 | 36,2 | 6,6 | 54,0 | 4,13 | 127,0 | 141,0 | 6,40 | 111 |
| 140 H | ⁹ | 44,450 1 3/4 | 25,22 | 38,70 | 39,00 | 25,40 | 12,70 | 42,2 | 7,4 | 58,0 | 4,94 | 172,4 | 180,0 | 8,30 | 111 |
| 160 H | ⁹ | 50,800 2 | 31,55 | 46,90 | 47,20 | 28,58 | 14,27 | 48,2 | 7,9 | 68,0 | 6,70 | 226,8 | 233,0 | 11,50 | 111 |
| 200 H | ⁹ | 63,500 2 1/2 | 37,85 | 57,60 | 57,90 | 39,68 | 19,84 | 60,3 | 10,0 | 84,0 | 11,60 | 353,8 | 400,0 | 20,00 | 111 |

Electrogalvanised or nickel-plated chains on request. In this case chains may only have 80 % of the tensile strength.

² without rollers ⁹ dismountable designs (with cottered/split pins) on request

For details on orders and enquiries see page 131. Standard sprockets as of page 78.
Information on the selection of chain sizes and drives as of page 118.

Connecting links: According to ISO (...)



No. 4 (B)
Inner link



No. 7 (A)
Outer link
(to be riveted)



No. 11 (E)
Spring clip
connecting link



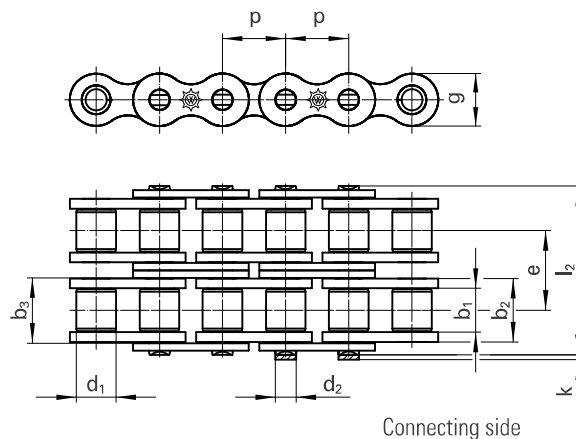
No. 111 (S)
Connecting link
with cottered pin



No. 12 (L)
Single
cranked link



No. 15 (C)
Double
cranked link



| Chain | | Pitch | Inner width | Inner link width | Outer plate width | Roller Ø | Pin Ø | Transverse pitch | Plate height | Projection over connecting link | Width over pin | Bearing area | Breaking load ISO | Breaking load | Weight | Connecting links | | |
|-------|--------------|--------|-------------|------------------|---------------------|---------------------|---------------------|---------------------|---------------------|---------------------------------|----------------|--------------|---------------------|---------------|---------------------|---------------------|-------|--------------|
| No. | Ind. | ISO | p | | b ₁ min. | b ₂ max. | b ₃ min. | d ₁ max. | d ₂ max. | e | g max. | k max. | l ₂ max. | f | F _B min. | F _B min. | q ≈ | No. |
| | | No. | mm | inch | mm | mm | mm | mm | mm | mm | mm | mm | mm | mm | cm ² | kN | kN | kg/m |
| 35-2 | ² | 06 C-2 | 9,525 | 3/8 | 4,68 | 7,47 | 7,52 | 5,08 | 3,58 | 10,13 | 9,0 | 3,3 | 23,4 | 0,53 | 15,8 | 17,0 | 0,70 | 11,12,15 |
| 40-2 | | 08 A-2 | 12,700 | 1/2 | 7,85 | 11,15 | 11,28 | 7,95 | 3,96 | 14,38 | 12,0 | 3,9 | 32,3 | 0,88 | 28,2 | 29,7 | 1,20 | 11,12,15 |
| 50-2 | | 10 A-2 | 15,875 | 5/8 | 9,40 | 13,80 | 13,93 | 10,16 | 5,08 | 18,11 | 15,0 | 4,1 | 39,9 | 1,40 | 44,4 | 62,0 | 1,78 | 11,12,15 |
| 60-2 | ⁹ | 12 A-2 | 19,050 | 3/4 | 12,57 | 17,70 | 17,85 | 11,91 | 5,94 | 22,78 | 18,0 | 4,6 | 49,8 | 2,10 | 63,6 | 76,0 | 3,15 | 11,111,12,15 |
| 80-2 | ⁹ | 16 A-2 | 25,400 | 1 | 15,75 | 22,50 | 22,70 | 15,88 | 7,92 | 29,29 | 24,1 | 5,4 | 62,7 | 3,56 | 113,4 | 135,0 | 4,90 | 11,111,12,15 |
| 100-2 | ⁹ | 20 A-2 | 31,750 | 1 1/4 | 18,90 | 27,40 | 27,60 | 19,05 | 9,53 | 35,76 | 30,1 | 6,1 | 77,0 | 5,22 | 177,0 | 205,0 | 7,60 | 111,12 |
| 120-2 | ⁹ | 24 A-2 | 38,100 | 1 1/2 | 25,22 | 35,30 | 35,60 | 22,23 | 11,10 | 45,44 | 36,2 | 6,6 | 96,3 | 7,84 | 254,0 | 290,0 | 10,80 | 111,12 |
| 140-2 | ⁹ | 28 A-2 | 44,450 | 1 3/4 | 25,22 | 37,00 | 37,30 | 25,40 | 12,70 | 48,87 | 42,2 | 7,4 | 103,0 | 9,40 | 344,8 | 357,0 | 14,30 | 111,12 |
| 160-2 | ⁹ | 32 A-2 | 50,800 | 2 | 31,55 | 45,00 | 45,30 | 28,58 | 14,27 | 58,55 | 48,2 | 7,9 | 124,0 | 12,84 | 453,6 | 455,0 | 19,40 | 111,12 |
| 200-2 | ⁹ | 40 A-2 | 63,500 | 2 1/2 | 37,85 | 54,70 | 55,00 | 39,68 | 19,84 | 71,55 | 60,3 | 10,0 | 151,0 | 21,70 | 707,6 | 730,0 | 33,00 | 111,12 |

Electrogalvanised or nickel-plated chains on request. In this case chains may only have 80 % of the tensile strength.

² without rollers ⁹ dismantlable designs (with cottered/split pins) on request

For details on orders and enquiries see page 131. Sprockets on request.
Information on the selection of chain sizes and drives as of page 118.

Connecting links: According to ISO (...)



No. 4 (B)
Inner link



No. 7 (A)
Outer link
(to be riveted)



No. 11 (E)
Spring clip
connecting link



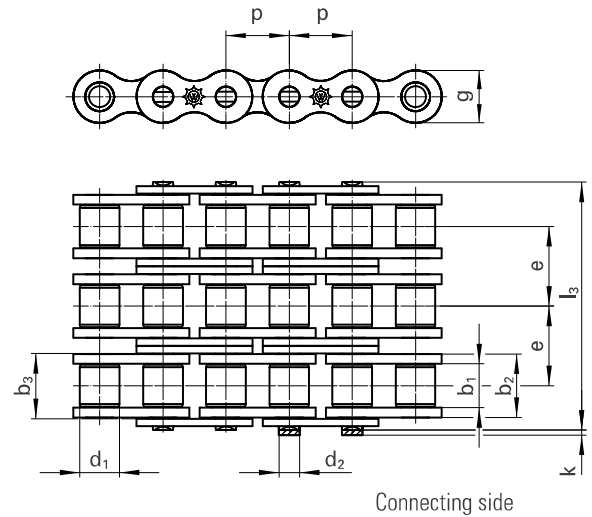
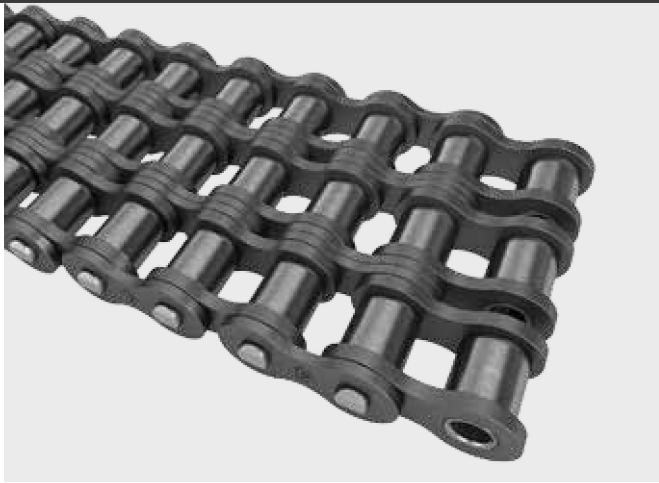
No. 111 (S)
Connecting link
with cottered pin



No. 12 (L)
Single
cranked link



No. 15 (C)
Double
cranked link



| Chain | | Pitch | Inner width | Inner link width | Outer plate width | Roller Ø | Pin Ø | Transverse pitch | Plate height | Projection over connecting link | Width over pin | Bearing area | Breaking load ISO | Breaking load | Weight | Connecting links | | |
|-------|--------------|---------|-------------|------------------|---------------------|---------------------|---------------------|---------------------|---------------------|---------------------------------|----------------|--------------|---------------------|---------------|---------------------|---------------------|-------|--------------|
| No. | Ind. | ISO No. | p | | b ₁ min. | b ₂ max. | b ₃ min. | d ₁ max. | d ₂ max. | e | g max. | k max. | l ₃ max. | f | F _B min. | F _B min. | q ≈ | No. |
| | | | mm | inch | mm | mm | mm | mm | mm | mm | mm | mm | mm | mm | cm ² | kN | kN | kg/m |
| 35-3 | ² | 06 C-3 | 9,525 | 3/8 | 4,68 | 7,47 | 7,52 | 5,08 | 3,58 | 10,13 | 9,0 | 3,3 | 33,5 | 0,80 | 23,7 | 25,5 | 1,05 | 11,12,15 |
| 40-3 | | 08 A-3 | 12,700 | 1/2 | 7,85 | 11,15 | 11,28 | 7,95 | 3,96 | 14,38 | 12,0 | 3,9 | 46,7 | 1,32 | 42,3 | 41,2 | 1,80 | 11,12,15 |
| 50-3 | | 10 A-3 | 15,875 | 5/8 | 9,40 | 13,80 | 13,93 | 10,16 | 5,08 | 18,11 | 15,0 | 4,1 | 57,9 | 2,10 | 66,6 | 88,0 | 3,02 | 11,12,15 |
| 60-3 | ⁹ | 12 A-3 | 19,050 | 3/4 | 12,57 | 17,70 | 17,85 | 11,91 | 5,94 | 22,78 | 18,0 | 4,6 | 72,6 | 3,15 | 95,4 | 105,0 | 4,70 | 11,111,12,15 |
| 80-3 | ⁹ | 16 A-3 | 25,400 | 1 | 15,75 | 22,50 | 22,70 | 15,88 | 7,92 | 29,29 | 24,1 | 5,4 | 91,7 | 5,35 | 170,1 | 193,0 | 7,50 | 11,111,12,15 |
| 100-3 | ⁹ | 20 A-3 | 31,750 | 1 1/4 | 18,90 | 27,40 | 27,60 | 19,05 | 9,53 | 35,76 | 30,1 | 6,1 | 113,0 | 7,83 | 265,5 | 305,0 | 11,20 | 111,12 |
| 120-3 | ⁹ | 24 A-3 | 38,100 | 1 1/2 | 25,22 | 35,30 | 35,60 | 22,23 | 11,10 | 45,44 | 36,2 | 6,6 | 141,0 | 11,76 | 381,0 | 410,0 | 16,10 | 111,12 |
| 140-3 | ⁹ | 28 A-3 | 44,450 | 1 3/4 | 25,22 | 37,00 | 37,30 | 25,40 | 12,70 | 48,87 | 42,2 | 7,4 | 152,0 | 14,10 | 517,2 | 520,0 | 21,40 | 111,12 |
| 160-3 | ⁹ | 32 A-3 | 50,800 | 2 | 31,55 | 45,00 | 45,30 | 28,58 | 14,27 | 58,55 | 48,2 | 7,9 | 182,0 | 19,26 | 680,4 | 685,0 | 29,10 | 111,12 |
| 200-3 | ⁹ | 40 A-3 | 63,500 | 2 1/2 | 37,85 | 54,70 | 55,00 | 39,68 | 19,84 | 71,55 | 60,3 | 10,0 | 223,0 | 32,56 | 1061,4 | 1095,0 | 50,00 | 111,12 |

Electrogalvanised or nickel-plated chains on request. In this case chains may only have 80 % of the tensile strength.

² without rollers ⁹ dismountable designs (with cottered/split pins) on request

For details on orders and enquiries see page 131. Sprockets on request.
Information on the selection of chain sizes and drives as of page 118.

Connecting links: According to ISO (...)



No. 4 (B)
Inner link



No. 7 (A)
Outer link
(to be riveted)



No. 11 (E)
Spring clip
connecting link



No. 111 (S)
Connecting link
with cottered pin



No. 12 (L)
Single
cranked link



No. 15 (C)
Double
cranked link