

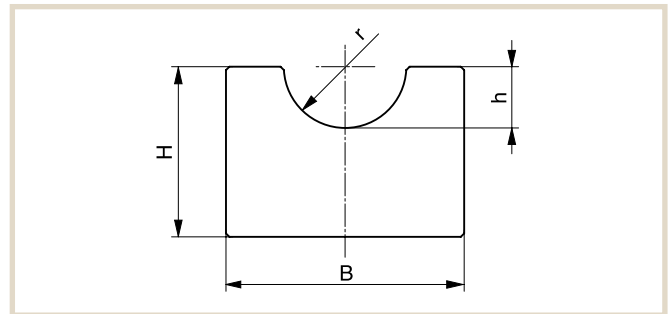
# Guides for Round Belts

## TYPE RR



Belt type / $\emptyset$	B	H	h	r	Article no.
5.0	20	10	3	3	231 010 027
6.3	20	10	4	4	231 010 028
8.0	20	12	5	5	231 010 029
9.5	25	15	6	6	231 010 030
12.5	28	20	8	7	231 010 031
15.0	33	25	10	9	231 010 032
18.0	38	25	12	10	231 010 033

Dimensions in mm



## TYPE RRC



Belt type / $\emptyset$	C profile type	B1	B2	H	Hc	h	r	Article no.
5.0	C3	20	20	10	15	3	3	231 110 035
								351 020 003
6.3	C3	20	20	15	18	4	4	231 110 036
								351 020 003
8.0	C3	20	20	15	18	5	5	231 110 037
								351 020 003
9.5	C5	25	28	15	20	6	6	231 110 038
								351 020 005
12.5	C5	28	28	15	20	8	7	231 110 039
								351 020 005
15.0	C9	33	38	20	25	10	9	231 110 040
								351 020 009
18.0	C9	38	38	20	25	12	10	231 110 041
								351 020 009

Dimensions in mm

