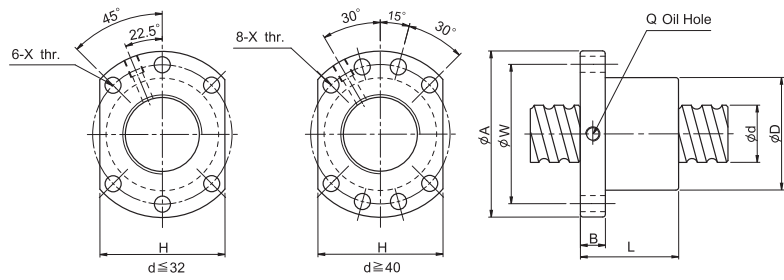


SFU Series



Unit: mm

Part No.	Main dimensions														
	d	l	Da	D	A	B	L	W	H	X	Q	n	Ca	Coa	K
SFU01605-4	16	5	3.175	28	48	10	50	38	40	5.5	M6	1x4	1380	3052	32
SFU01610-3	16	10	3.175	28	48	10	57	38	40	5.5	M6	1x3	1103	2401	26
SFU02005-4	20	5	3.175	36	58	10	51	47	44	6.6	M6	1x4	1551	3875	39
SFU02505-4	25	5	3.175	40	62	10	51	51	48	6.6	M6	1x4	1724	4904	45
SFU02510-4	25	10	4.762	40	62	12	85	51	48	6.6	M6	1x4	2954	7295	50
SFU03205-4	32	5	3.175	50	80	12	52	65	62	9	M6	1x4	1922	6343	54
SFU03210-4	32	10	6.350	50	80	12	90	65	62	9	M6	1x4	4805	12208	61
SFU04005-4	40	5	3.175	63	93	14	55	78	70	9	M8	1x4	2110	7988	63
SFU04010-4	40	10	6.350	63	93	14	93	78	70	9	M8	1x4	5399	15500	73

I: Lead **Da:** Ball Dia. **n:** No. of Circuits **K:** Stiffness(N/um) **Ca:** Basic Dynamic Rating Load(kN)
Coa: Basic Static Rating Load(kN)