

L751 CIN



INOX

WINGNUT WITH STAINLESS STEEL THREADED STUD

Material:

Reinforced polyamide.
Oils and greases resistant.

Surface:

Satin.

Colour:

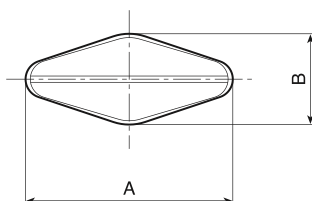
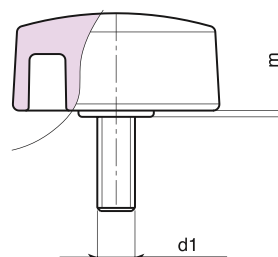
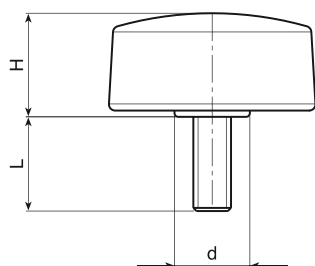
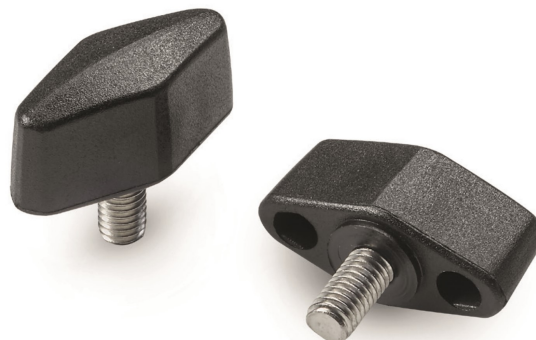
Black (RAL 9011).

Main Insert:

Stainless steel threaded stud (AISI 303).
(tolerance 6g).

SPECIAL REQUESTS:

- It is possible to supply inserts in different lengths or by special design, on request and for quantities.
- It is possible to supply colours as shown in the table on page L-31, on request and for quantities.



Art.	A	B	H	m	d	LM	d1 6g	Q	g
L75132.TM05X..01CIN	33	15	16,5	1	12	60	M05	A.R.	-
L75132.TM06X..01CIN	33	15	16,5	1	12	60	M06	11-16-30	11-13-17
L75132.TM08X1601CIN	33	15	16,5	1	12	60	M08	16	15
L75148.TM06X..01CIN	48	15	16	1	12,5	70	M06	A.R.	-
L75148.TM08X..01CIN	48	15	16	1	12,5	70	M08	A.R.	-

Enter the stud length choice in the two .. of the article code. Lengths by request with 250 pieces minimum quantity.

LM = Maximum mouldable length.

A.R. = by request.